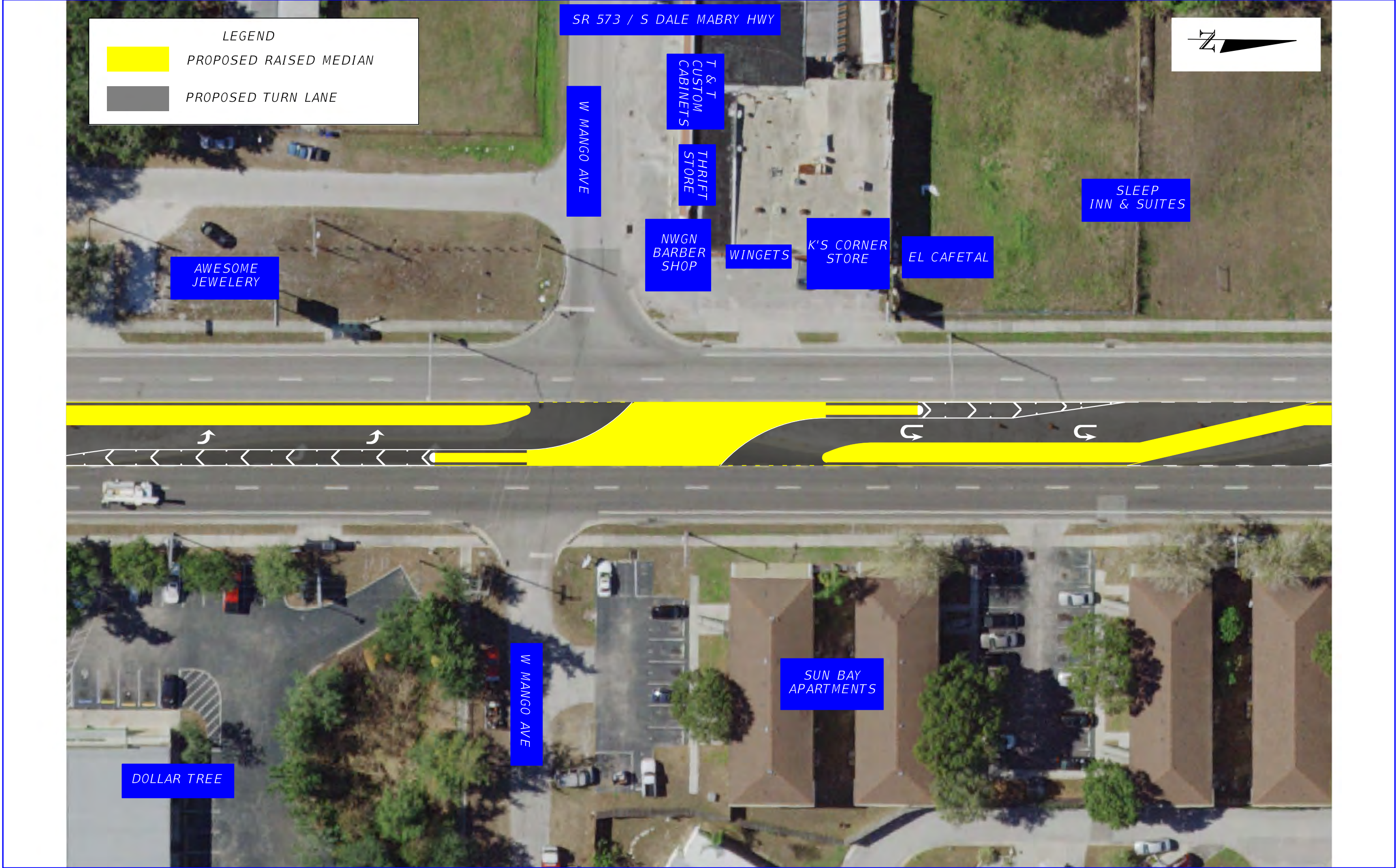




SR 573 / S. DALE MABRY HWY. MEDIAN MODIFICATIONS FROM PINEWOOD ST. TO GANDY BLVD.		ROAD NO.	COUNTY	FINANCIAL PROJECT ID	SR 573 PROPOSED MEDIAN MODIFICATION
		573	HILLSBOROUGH	437646-1-52-01	

THE OFFICIAL RECORD OF THIS SHEET IS THE ELECTRONIC FILE DIGITALLY SIGNED AND SEALED UNDER RULE 61G15-23.004, F.A.C.



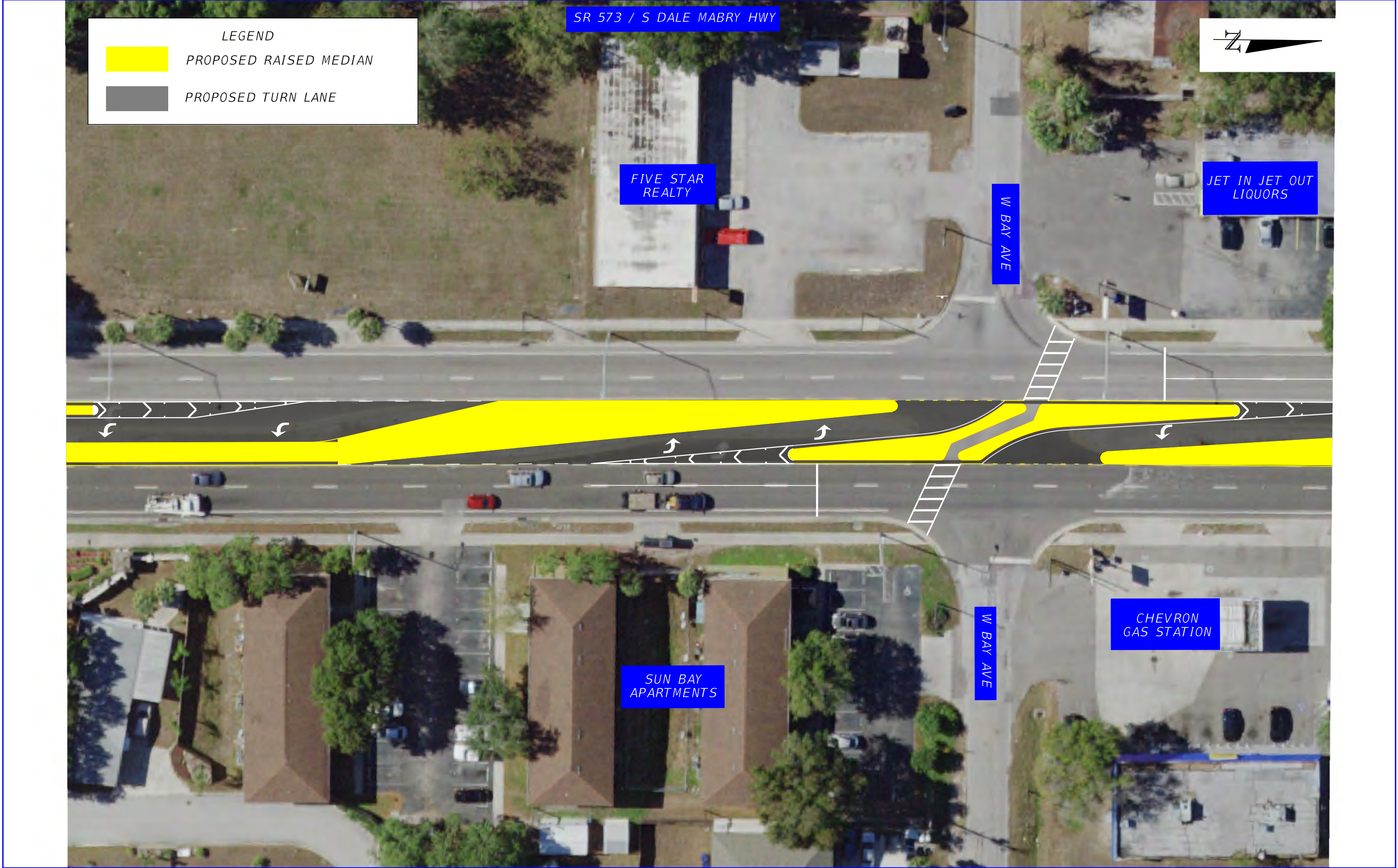
SR 573 / S. DALE MABRY HWY. MEDIAN MODIFICATIONS FROM PINWOOD ST. TO GANDY BLVD.		ROAD NO.	COUNTY	FINANCIAL PROJECT ID	SR 573 PROPOSED MEDIAN MODIFICATION
		573	HILLSBOROUGH	437646-1-52-01	

THE OFFICIAL RECORD OF THIS SHEET IS THE ELECTRONIC FILE DIGITALLY SIGNED AND SEALED UNDER RULE 61G15-23.004, F.A.C.



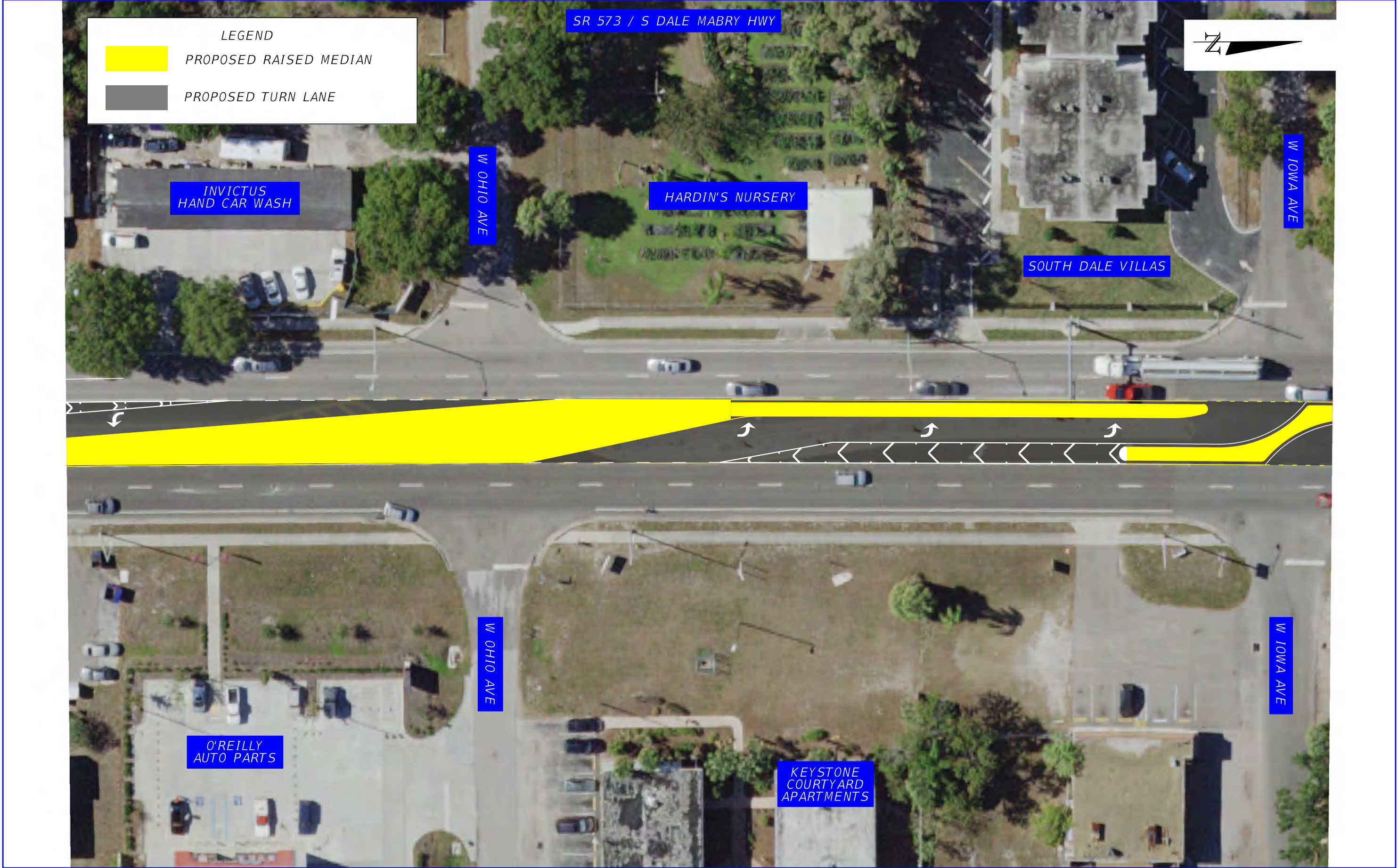
SR 573 / S. DALE MABRY HWY. MEDIAN MODIFICATIONS FROM PINEWOOD ST. TO GANDY BLVD.		ROAD NO.	COUNTY	FINANCIAL PROJECT ID	SR 573 PROPOSED MEDIAN MODIFICATION
		573	HILLSBOROUGH	437646-1-52-01	

THE OFFICIAL RECORD OF THIS SHEET IS THE ELECTRONIC FILE DIGITALLY SIGNED AND SEALED UNDER RULE 61G15-23.004, F.A.C.



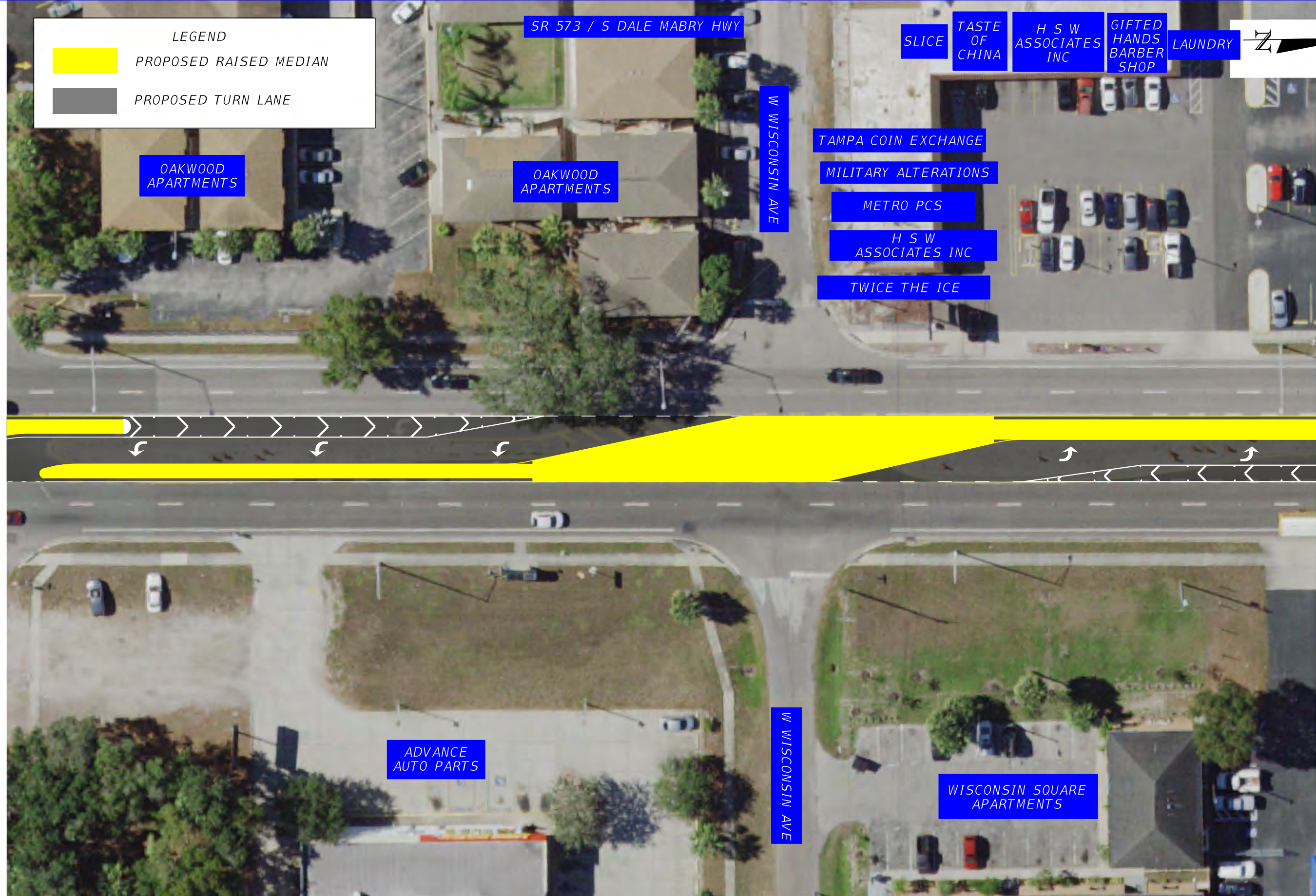
SR 573 / S. DALE MABRY HWY. MEDIAN MODIFICATIONS FROM PINEWOOD ST. TO GANDY BLVD.		ROAD NO.	COUNTY	FINANCIAL PROJECT ID	SR 573 PROPOSED MEDIAN MODIFICATION
		573	HILLSBOROUGH	437646-1-52-01	

THE OFFICIAL RECORD OF THIS SHEET IS THE ELECTRONIC FILE DIGITALLY SIGNED AND SEALED UNDER RULE 61G15-23.004, F.A.C.



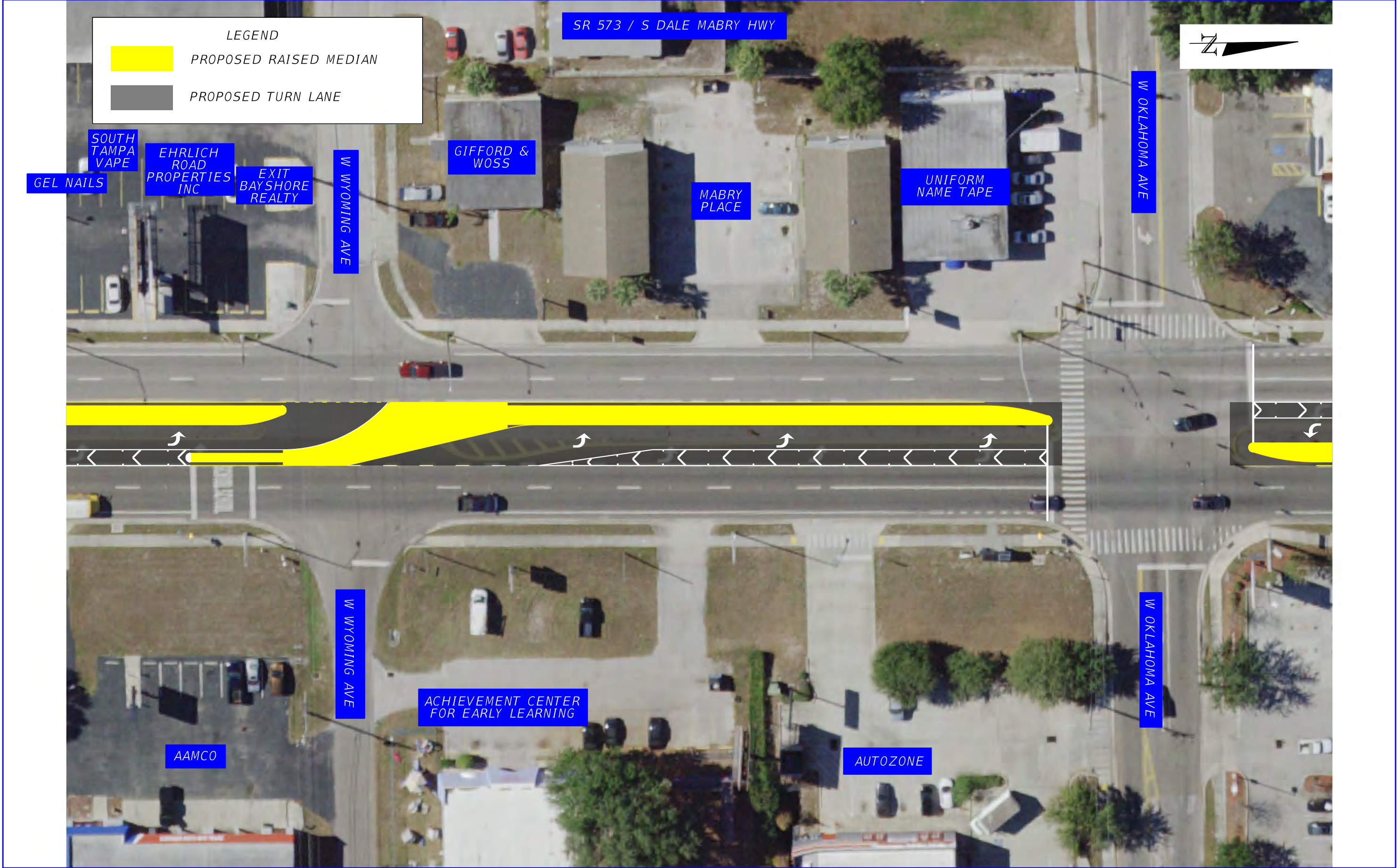
SR 573 / S. DALE MABRY HWY. MEDIAN MODIFICATIONS FROM PINWOOD ST. TO GANDY BLVD.		ROAD NO.	COUNTY	FINANCIAL PROJECT ID	SR 573 PROPOSED MEDIAN MODIFICATION
		573	HILLSBOROUGH	437646-1-52-01	

THE OFFICIAL RECORD OF THIS SHEET IS THE ELECTRONIC FILE DIGITALLY SIGNED AND SEALED UNDER RULE 61G15-23.004, F.A.C.



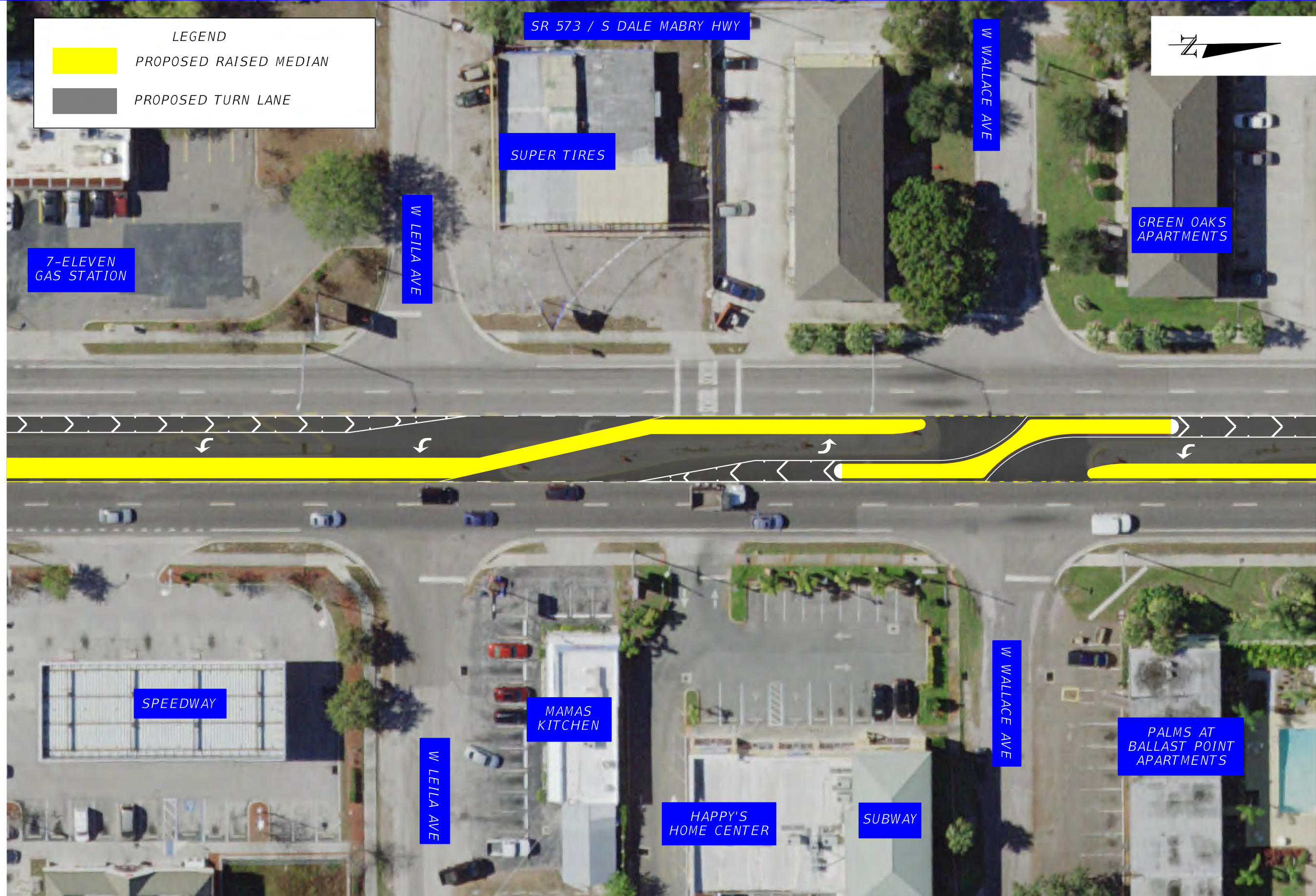
SR 573 / S. DALE MABRY HWY. MEDIAN MODIFICATIONS FROM PINWOOD ST. TO GANDY BLVD.		ROAD NO.	COUNTY	FINANCIAL PROJECT ID	SR 573 PROPOSED MEDIAN MODIFICATION
		573	HILLSBOROUGH	437646-1-52-01	

THE OFFICIAL RECORD OF THIS SHEET IS THE ELECTRONIC FILE DIGITALLY SIGNED AND SEALED UNDER RULE 61G15-23.004, F.A.C.

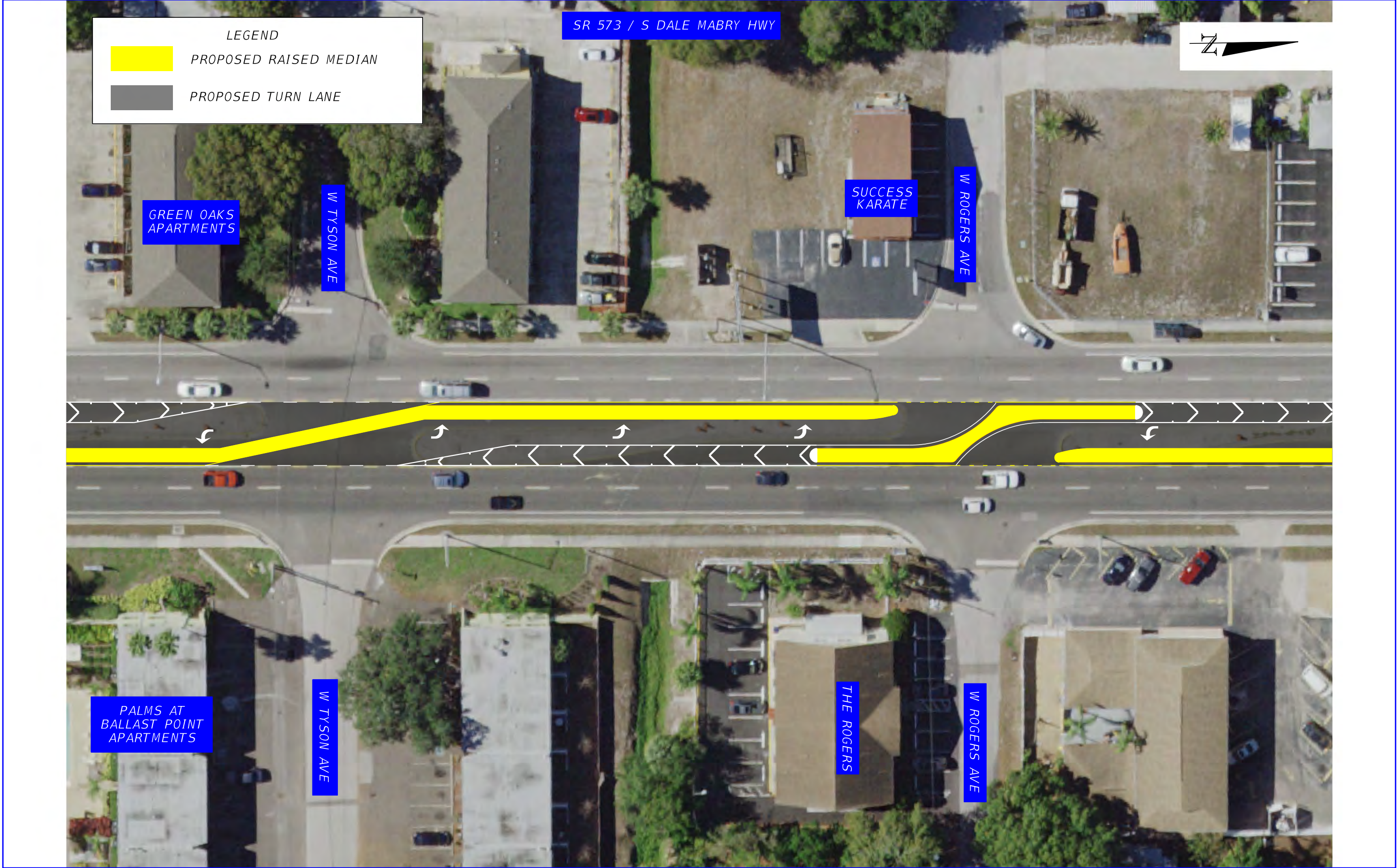


SR 573 / S. DALE MABRY HWY. MEDIAN MODIFICATIONS FROM PINWOOD ST. TO GANDY BLVD.		ROAD NO.	COUNTY	FINANCIAL PROJECT ID	SR 573 PROPOSED MEDIAN MODIFICATION
		573	HILLSBOROUGH	437646-1-52-01	

THE OFFICIAL RECORD OF THIS SHEET IS THE ELECTRONIC FILE DIGITALLY SIGNED AND SEALED UNDER RULE 61G15-23.004, F.A.C.



SR 573 / S. DALE MABRY HWY. MEDIAN MODIFICATIONS FROM PINWOOD ST. TO GANDY BLVD.		ROAD NO.	COUNTY	FINANCIAL PROJECT ID	SR 573 PROPOSED MEDIAN MODIFICATION
		573	HILLSBOROUGH	437646-1-52-01	



SR 573 / S. DALE MABRY HWY. MEDIAN MODIFICATIONS FROM PINWOOD ST. TO GANDY BLVD.		ROAD NO.	COUNTY	FINANCIAL PROJECT ID	SR 573 PROPOSED MEDIAN MODIFICATION
		573	HILLSBOROUGH	437646-1-52-01	

THE OFFICIAL RECORD OF THIS SHEET IS THE ELECTRONIC FILE DIGITALLY SIGNED AND SEALED UNDER RULE 61G15-23.004, F.A.C.

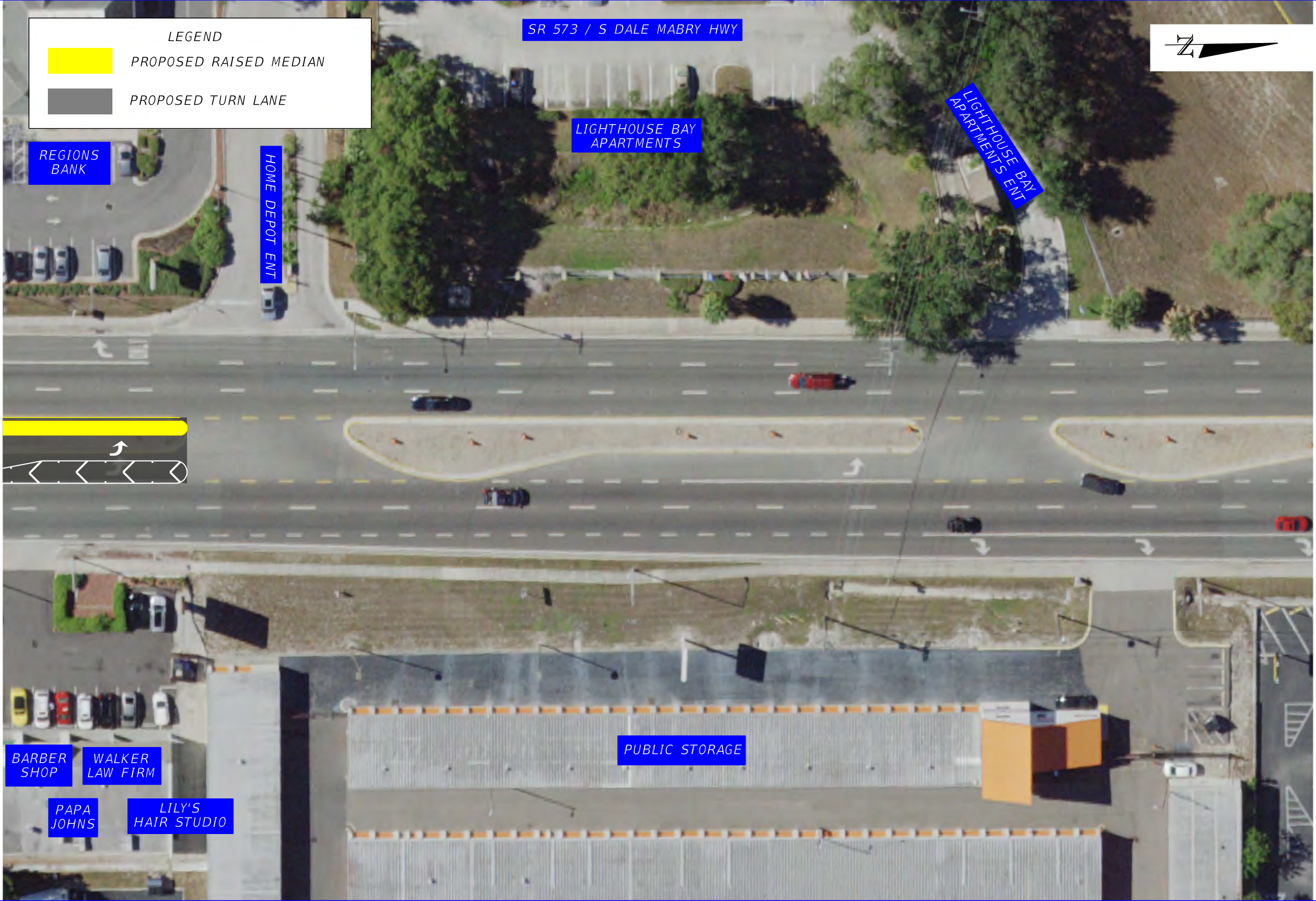


SR 573 / S. DALE MABRY HWY. MEDIAN MODIFICATIONS FROM PINWOOD ST. TO GANDY BLVD.		ROAD NO.	COUNTY	FINANCIAL PROJECT ID	SR 573 PROPOSED MEDIAN MODIFICATION
		573	HILLSBOROUGH	437646-1-52-01	



SR 573 / S. DALE MABRY HWY. MEDIAN MODIFICATIONS FROM PINWOOD ST. TO GANDY BLVD.		ROAD NO.	COUNTY	FINANCIAL PROJECT ID	SR 573 PROPOSED MEDIAN MODIFICATION
		573	HILLSBOROUGH	437646-1-52-01	

THE OFFICIAL RECORD OF THIS SHEET IS THE ELECTRONIC FILE DIGITALLY SIGNED AND SEALED UNDER RULE 61G15-23.004, F.A.C.



SR 573 / S. DALE MABRY HWY. MEDIAN MODIFICATIONS FROM PINEWOOD ST. TO GANDY BLVD.		ROAD NO.	COUNTY	FINANCIAL PROJECT ID	SR 573 PROPOSED MEDIAN MODIFICATION
		573	HILLSBOROUGH	437646-1-52-01	

THE OFFICIAL RECORD OF THIS SHEET IS THE ELECTRONIC FILE DIGITALLY SIGNED AND SEALED UNDER RULE 61G15-23.004, F.A.C.