



Florida Department of Transportation

RON DESANTIS
GOVERNOR

11201 N. Malcolm McKinley Drive
Tampa, Florida 33612

JARED W. PERDUE, P.E.
SECRETARY

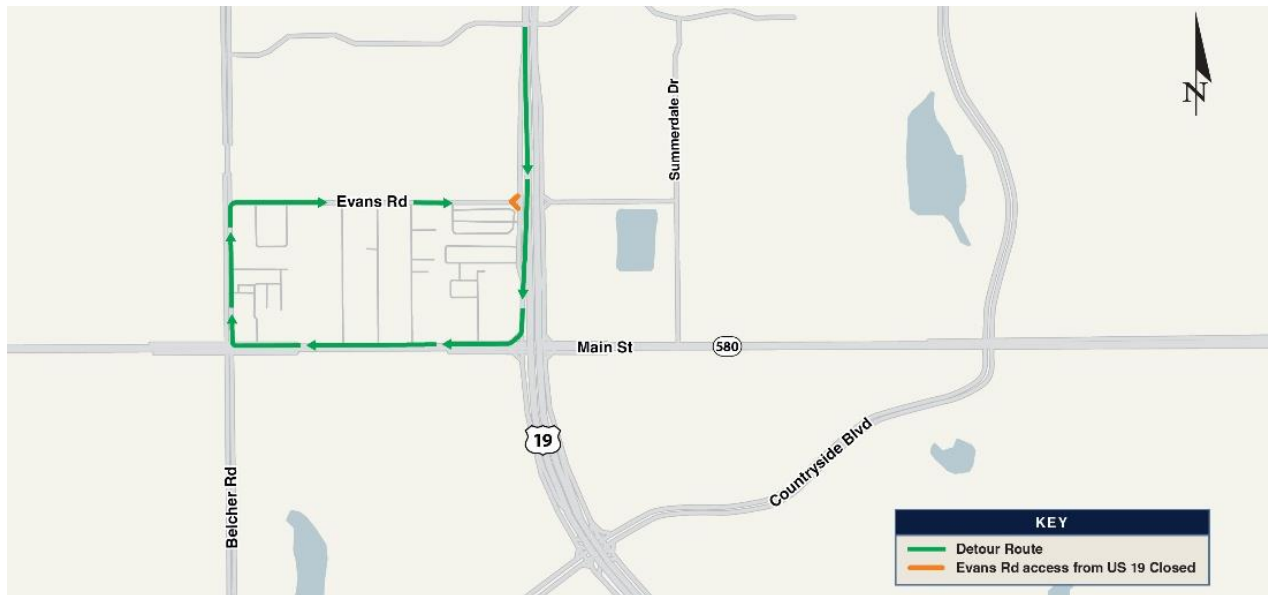
For Immediate Release

November 26, 2024

Contact: Maddie Griffin

(727) 575-8334 | Roadwork@dot.state.fl.us

Evans Road from US 19 Frontage Road Closing Temporarily



Clearwater, FL – Beginning Monday, December 2, access at Evans Road from the southbound US 19 Frontage Road is closing for approximately two weeks, weather permitting.

During this temporary road closure, motorists will have to detour around the work zone using SR 580 (Main Street) and Belcher Road.

Advanced warning signs and electronic message boards will assist motorists traveling through the area. Drivers should use caution while traveling through the work zone and remain alert for construction workers.

This road closure is necessary as part of the ongoing improvements to US 19 from SR 580 to the north of CR 95 in Pinellas County.

For more information on this project or to sign up to receive construction updates and traffic alerts, please visit FDOTTampaBay.com

###

FDOTTampaBay.com | X: [@MyFDOT_Tampa](https://twitter.com/MyFDOT_Tampa) | Facebook: [@MyFDOTTampa](https://www.facebook.com/MyFDOTTampa)