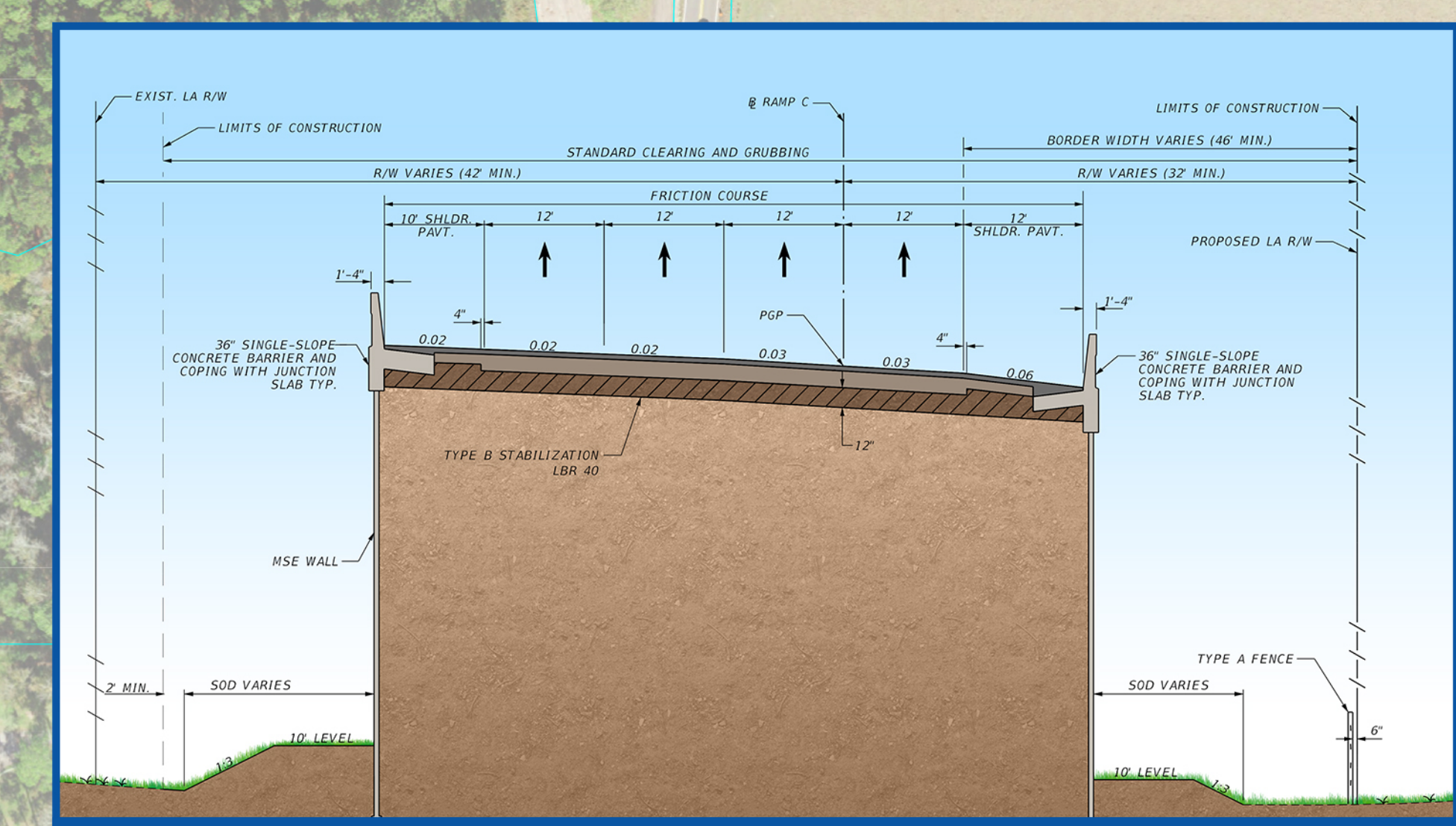
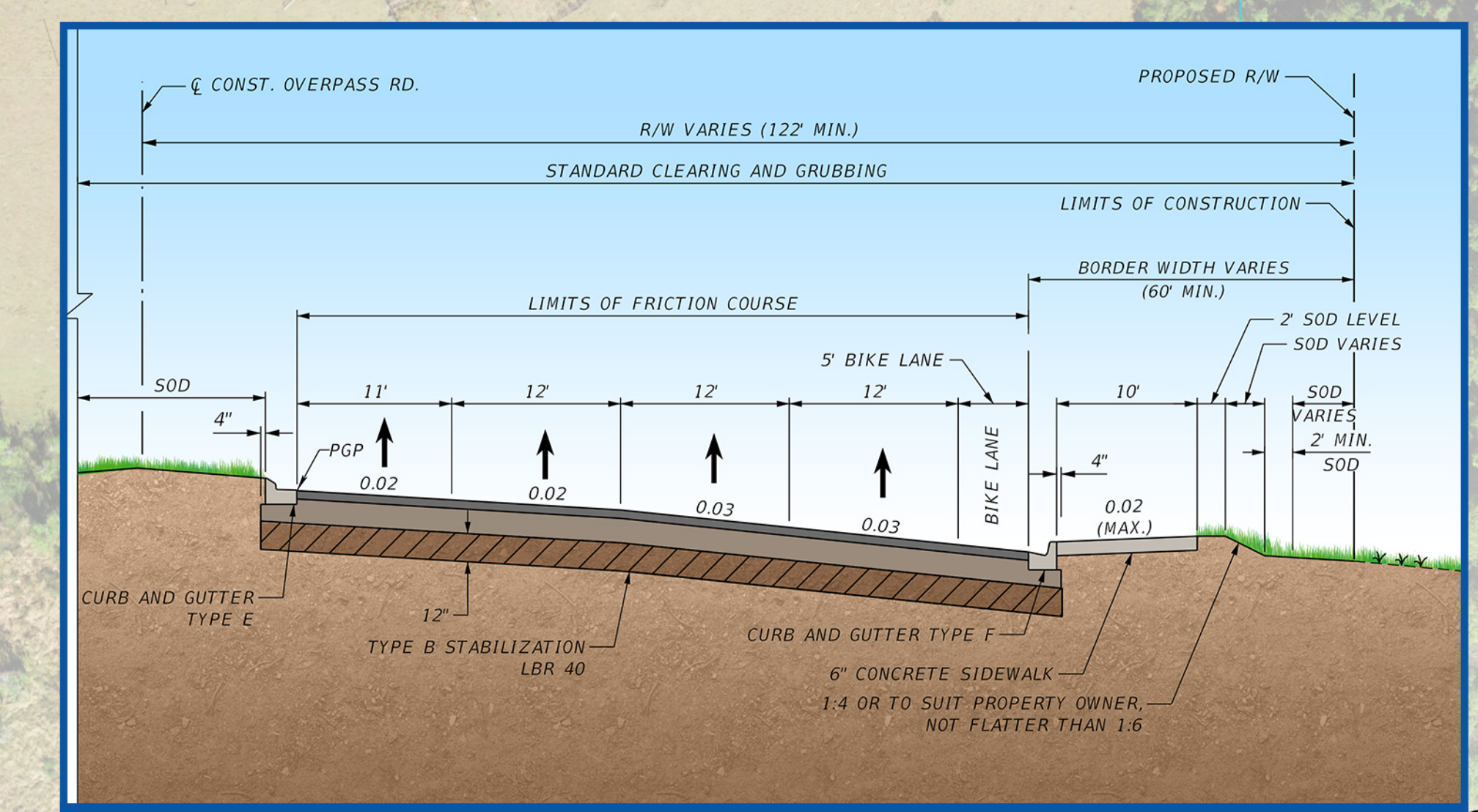


### LEGEND

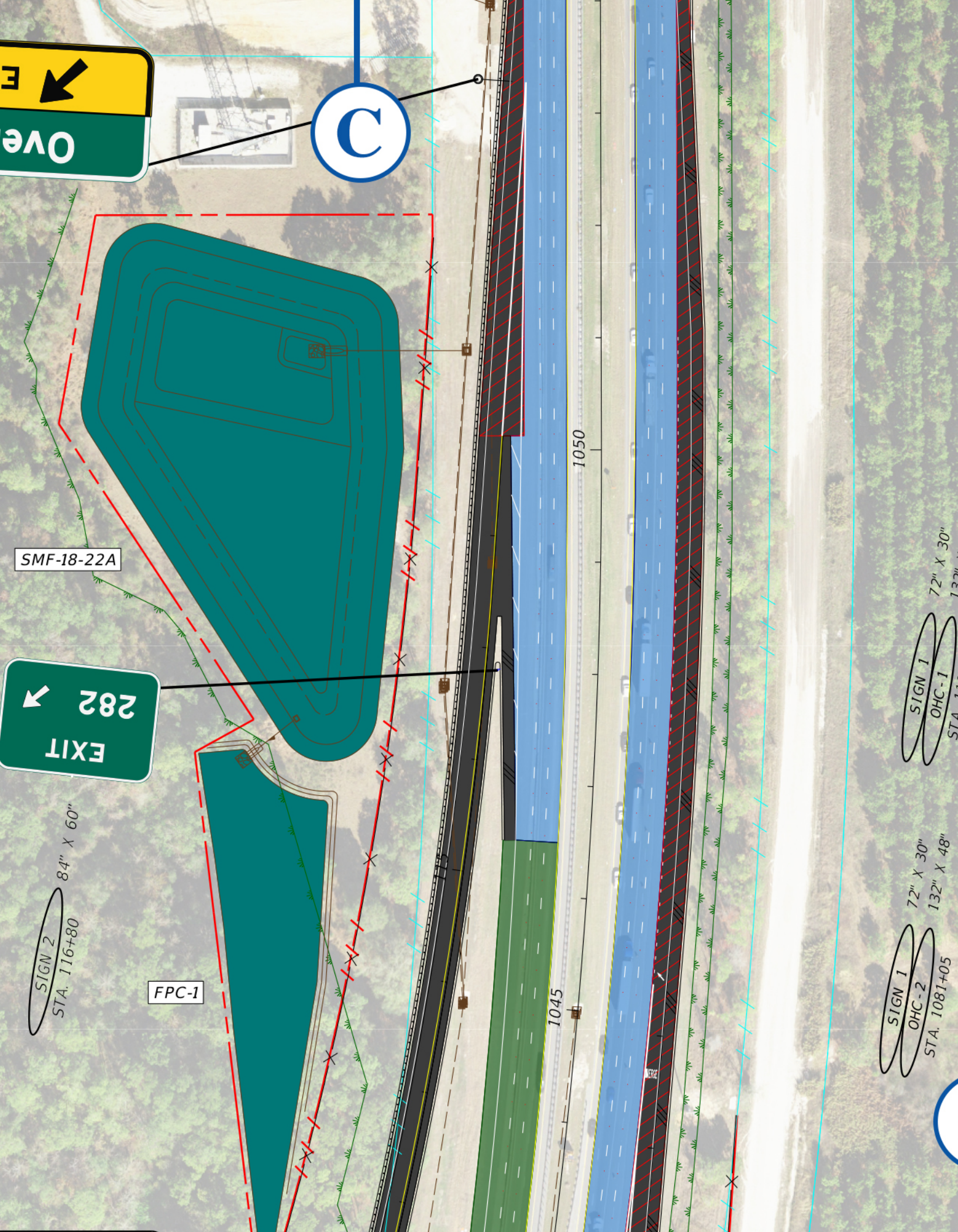
DIRECTION OF TRAFFIC	PROPOSED STABILIZED ROAD	PROPOSED LA R/W
NEW CONSTRUCTION	10' CONCRETE SIDEWALK	WETLAND
WIDENING	6' CONCRETE SIDEWALK	PROPOSED SIGN PANEL
MILLING AND RESURFACING	CONCRETE DITCH LINING	PROPOSED SINGLE POST SIGN
MILLING AND RESURFACING FOR TTCF	PROPOSED FENCE	PROPOSED MULTI POST SIGN
PROPOSED FIB BRIDGE SPANS	EXIST. R/W	PROPOSED SPAN SIGN STRUCTURE
PROPOSED STEEL FLYOVER SPANS	EXIST. LA R/W	PROPOSED CANTILEVER SIGN STRUCTURE
PROPOSED POND	PROPOSED R/W	POTENTIALLY ACTIVE GOPHER TORTOISE BURROW



**A HIGH SIDE SHOULDER TYPICAL SECTION**  
Ramp C shown, Ramps A, B and the Flyover have a similar highside shoulder slope minimizing drainage pipe and structures within the MSE walls



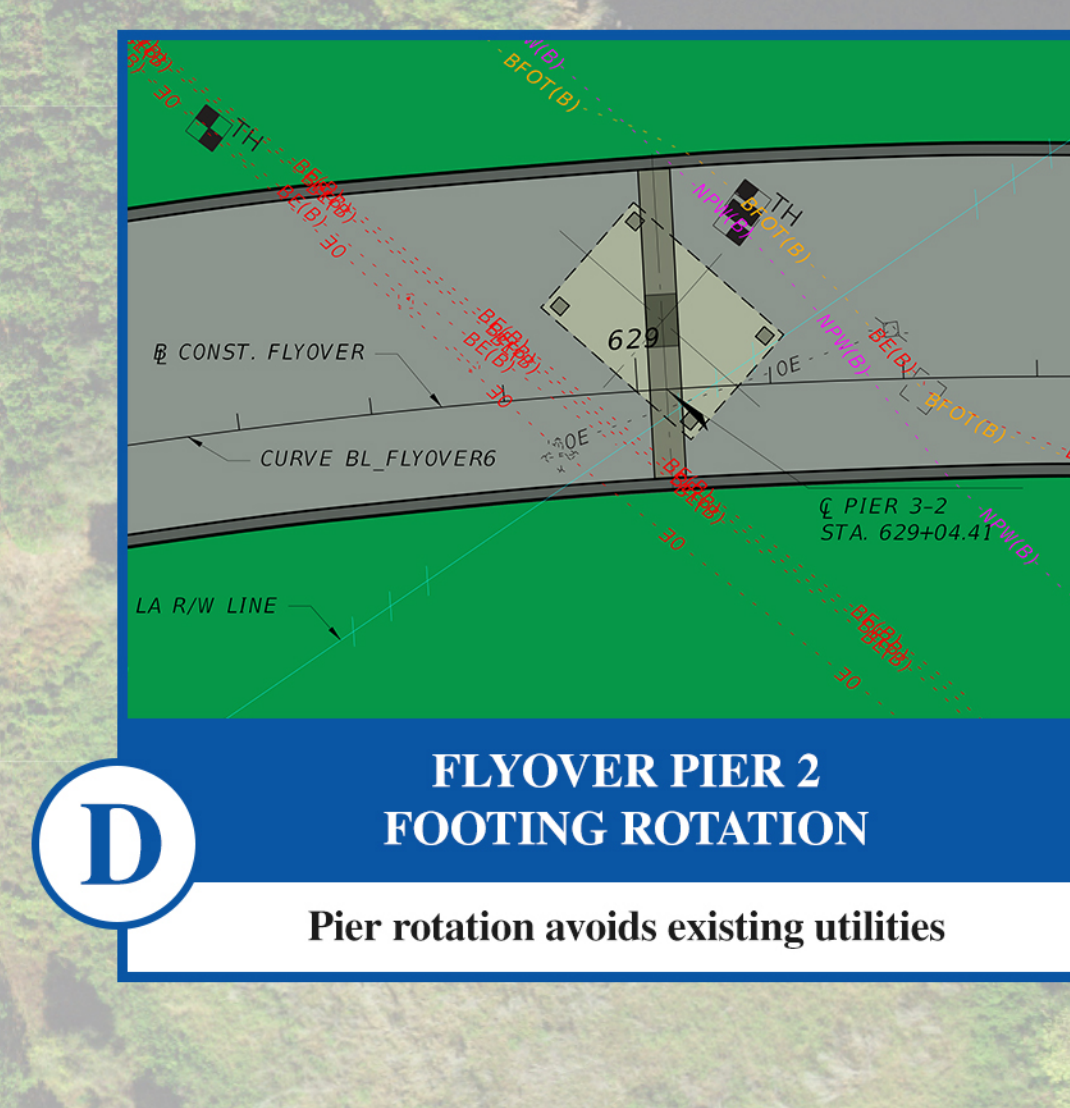
**B ATC 6 - 10' CONCRETE SIDEWALK FROM WESLEY CHAPEL DISTRICT PARK ENTRANCE TO BOYETTE ROAD**  
Improves pedestrian and bicycle access to the Wesley Chapel District Park while maintaining WRCC transmission pole access



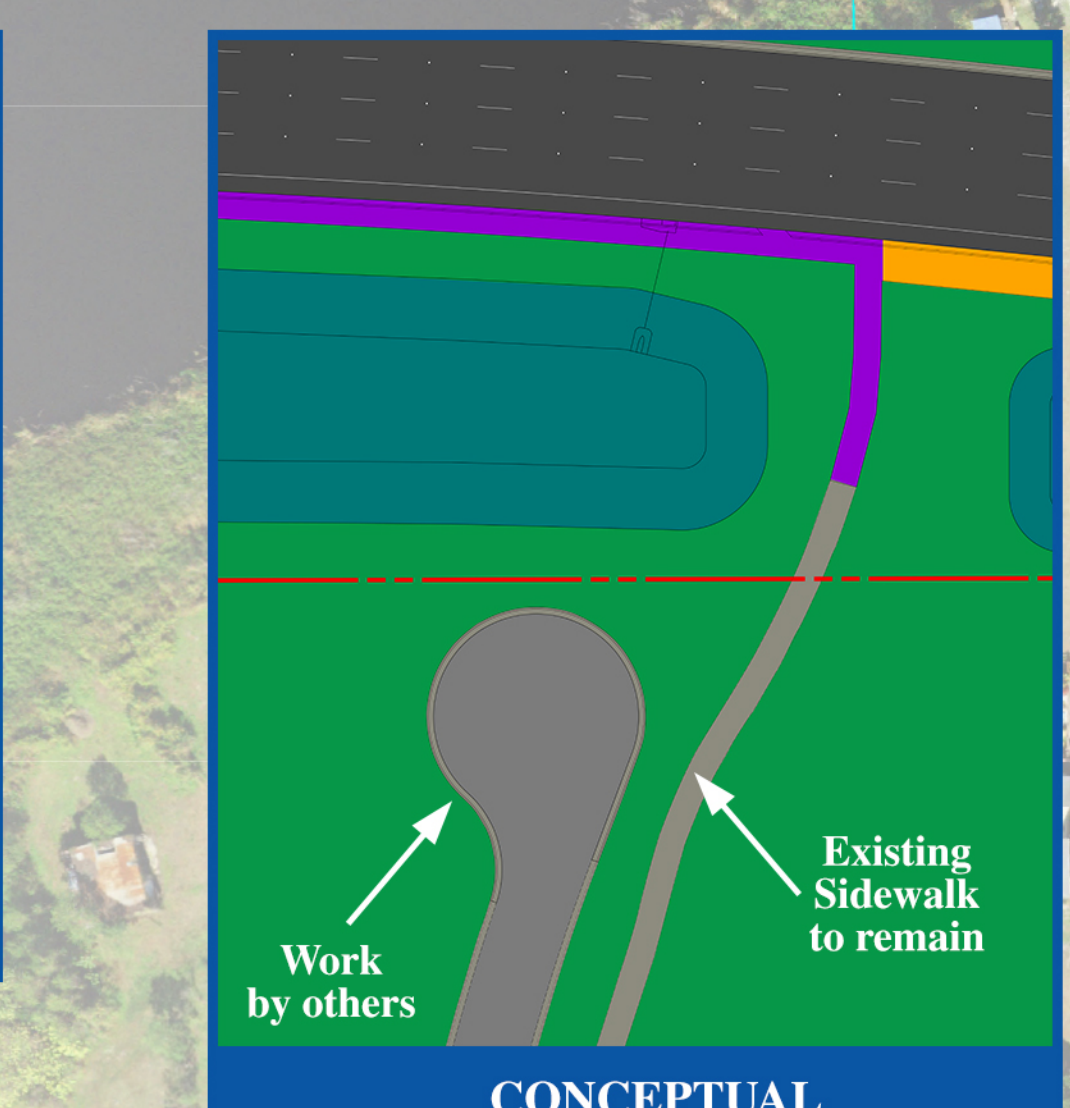
**C ADDITIONAL I-75 SB SIGNAGE**  
Overpass Road exit signage for SB I-75 traffic to improve driver messaging



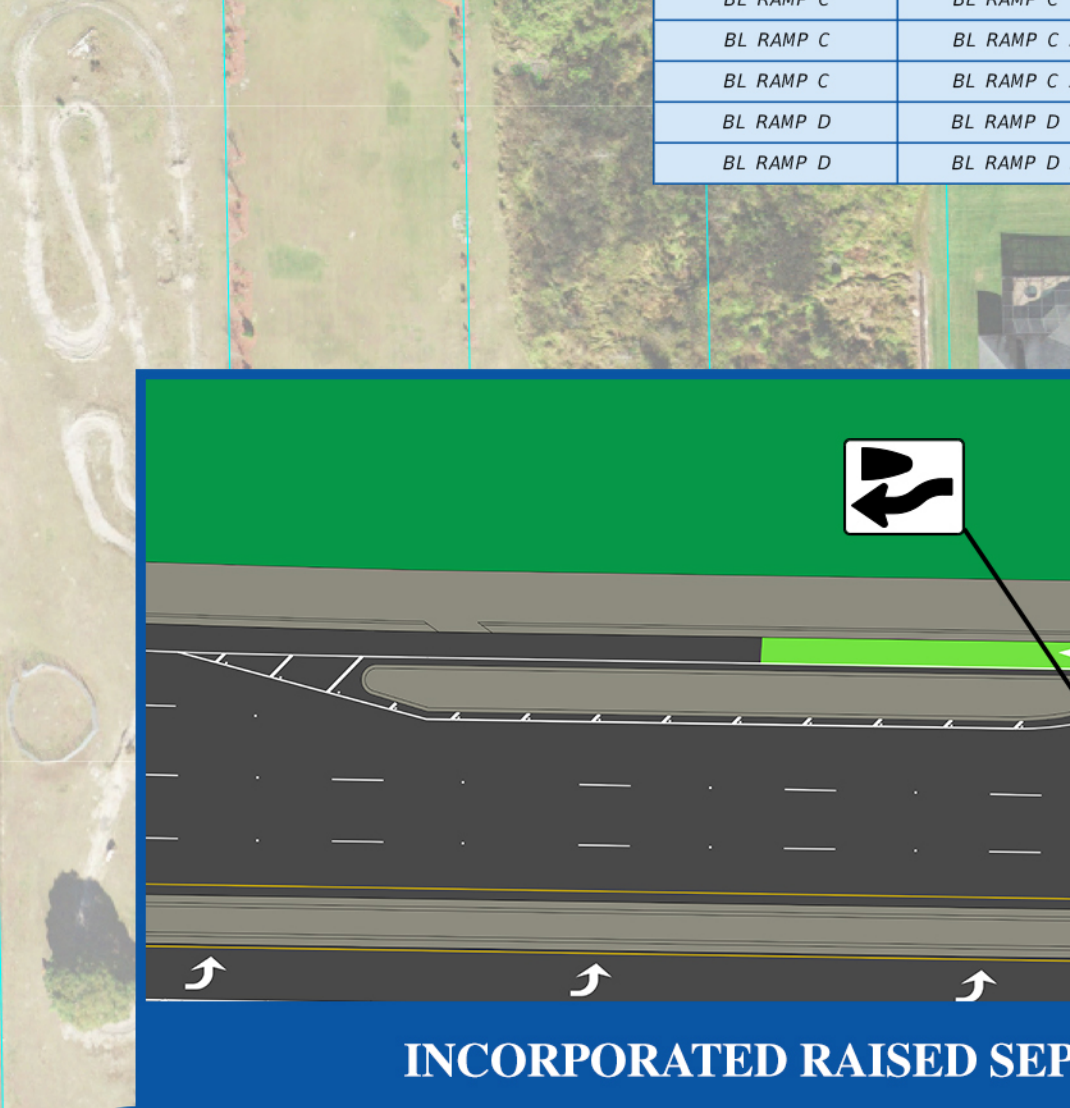
**D FLYOVER PIER 2 FOOTING ROTATION**  
Pier rotation avoids existing utilities



**E CONCEPTUAL ROADWAY TERMINUS**  
Provides aesthetic improvements to pedestrian park entrance



**F INCORPORATED RAISED SEPARATOR**  
Provides buffer and improves bicycle safety  
"Keep Left" sign and green bike lane improves visibility and driver guidance



**G ADDED BOYETTE ROAD PEDESTRIAN FEATURES**  
Improves connectivity and pedestrian safety

### BRIDGE DATA

Bridge	Bridge No.	Begin Sta.	End Sta.	Superstructure Type
EB Overpass	140161	3019+93.93	3023+20.64	FIB
WB Overpass	140162	2020+08.47	2023+34.28	FIB
Flyover	140163	627+69.16	629+04.41	FIB
Spans 2-1 thru 2-3		629+04.41	634+01.35	Continuous Steel Girder
Span 2-4		634+01.35	635+72.93	FIB

### CURVE & COORDINATE DATA

BASELINE	CURVE NAME	PC	PT	DELTA	D	L	T	R	BEARING		#	
									BACK	AHEAD		
BL CONST. WB	BL CONST. WB 1	2009+79.38	2013+07.79	2016+05.07	2° 42' 24.34" (E)	10' 13' 52.37"	406.39	108.41	10.1490	N 89° 53' 29.46" E	N 45° 13' 02.12" E	NC
BL CONST. WB	BL CONST. WB 2	2013+07.79	2016+05.07	2018+04.41	2° 27' 04.34" (E)	11' 08' 46.98"	424.44	113.56	4.9989	N 89° 13' 02.12" E	N 45° 13' 02.12" E	NC
BL CONST. WB	BL CONST. WB 3	2018+04.41	2020+08.47	2023+34.28	2° 04' 38.87" (E)	12' 04' 31.97"	438.97	119.98	5.2000	N 89° 13' 02.12" E	N 45° 13' 02.12" E	NC
BL CONST. WB	BL CONST. WB 4	2023+34.28	2026+05.12	2029+08.58	2° 04' 38.87" (E)	12' 04' 31.97"	439.79	121.00	4.9350	N 89° 04' 30.45" E	N 45° 13' 02.12" E	NC
BL CONST. WB	BL CONST. WB 5	2029+08.58	2032+04.41	2035+04.41	2° 04' 38.87" (E)	12' 04' 31.97"	439.39	120.80	5.2000	N 89° 04' 30.45" E	N 45° 13' 02.12" E	NC
BL CONST. WB	BL CONST. WB 6	2035+04.41	2038+04.41	2041+04.41	2° 04' 38.87" (E)	12' 04' 31.97"	439.39	120.80	5.2000	N 89° 04' 30.45" E	N 45° 13' 02.12" E	NC
BL CONST. WB	BL CONST. WB 7	2041+04.41	2044+04.41	2047+04.41	2° 04' 38.87" (E)	12' 04' 31.97"	439.39	120.80	5.2000	N 89° 04' 30.45" E	N 45° 13' 02.12" E	NC
BL CONST. WB	BL CONST. WB 8	2047+04.41	2050+04.41	2053+04.41	2° 04' 38.87" (E)	12' 04' 31.97"	439.39	120.80	5.2000	N 89° 04' 30.45" E	N 45° 13' 02.12" E	NC
BL CONST. WB	BL CONST. WB 9	2053+04.41	2056+04.41	2059+04.41	2° 04' 38.87" (E)	12' 04' 31.97"	439.39	120.80	5.2000	N 89° 04' 30.45" E	N 45° 13' 02.12" E	NC
BL CONST. WB	BL CONST. WB 10	2059+04.41	2062+04.41	2065+04.41	2° 04' 38.87" (E)	12' 04' 31.97"	439.39	120.80	5.2000	N 89° 04' 30.45" E	N 45° 13' 02.12" E	NC
BL CONST. WB	BL CONST. WB 11	2065+04.41	2068+04.41	2071+04.41	2° 04' 38.87" (E)	12' 04' 31.97"	439.39	120.80	5.2000	N 89° 04' 30.45" E	N 45° 13' 02.12" E	NC
BL CONST. WB	BL CONST. WB 12	2071+04.41	2074+04.41	2077+04.41	2° 04' 38.87" (E)	12' 04' 31.97"	439.39	120.80	5.2000	N 89° 04' 30.45" E	N 45° 13' 02.12" E	NC
BL CONST. WB	BL CONST. WB 13	2077+04.41	2080+04.41	2083+04.41	2° 04' 38.87" (E)	12' 04' 31.97"	439.39	120.80	5.2000	N 89° 04' 30.45" E	N 45° 13' 02.12" E	NC
BL CONST. WB	BL CONST. WB 14	2083+04.41	2086+04.41	2089+04.41	2° 04' 38.87" (E)	12' 04' 31.97"	439.39	120.80	5.2000	N 89° 04' 30.45" E	N 45° 13' 02.12" E	NC
BL CONST. WB	BL CONST. WB 15	2089+04.41	2092+04.41	2095+04.41	2° 04' 38.87" (E)	12' 04' 31.97"	439.39	120.80	5.2000	N 89° 04' 30.45" E	N 45° 13' 02.12" E	NC
BL CONST. WB	BL CONST. WB 16	2095+04.41	2098+04.41	2101+04.41	2° 04' 38.87" (E)	12' 04' 31.97"	439.39	120.80	5.2000	N 89° 04' 30.45" E	N 45° 13' 02.12" E	NC
BL CONST. WB	BL CONST. WB 17	2101+04.41	2104+04.41	2107+04.41	2° 04' 38.87" (E)	12' 04' 31.97"	439.39	120.80	5.2000	N 89° 04' 30.45" E	N 45° 13' 02.12" E	NC
BL CONST. WB	BL CONST. WB 18	2107+04.41	2110+04.41	2113+04.41	2° 04' 38.87" (E)	12' 04' 31.97"	439.39	120.80	5.2000	N 89° 04' 30.45" E	N 45° 13' 02.12" E	NC
BL CONST. WB	BL CONST. WB 19	2113+04.41	2116+04.41	2119+04.41	2° 04' 38.87" (E)	12' 04' 31.97"	439.39	120.80	5.2000	N 89° 04' 30.45" E	N 45° 13' 02.12" E	NC
BL CONST. WB	BL CONST. WB 20	2119+04.41	2122+04.41	2125+04.41	2° 04' 38.87" (E)	12' 04' 31.97"	439.39	120.80	5.2000	N 89° 04' 30.45" E	N 45° 13' 02.12" E	NC
BL CONST. WB	BL CONST. WB 21	2125+04.41	2128+04.41	2131+04.41	2° 04' 38.87" (E)	12' 04' 31.97"	439.39	120.80	5.2000	N 89° 04' 30.45" E	N 45° 13' 02.12" E	NC
BL CONST. WB	BL CONST. WB 22	2131+04.41	2134+04.41	2137+04.41	2° 04' 38.87" (E)	12' 04' 31.97"	439.39	120.80	5.2000	N 89° 04' 30.45" E	N 45° 13' 02.12" E	NC
BL CONST. WB	BL CONST. WB 23	2137+04.41	2140+04.41	2143+04.41	2° 04' 38.87" (E)	12' 04' 31.97"	439.39	120.80	5.2000	N 89° 04' 30.45" E	N 45° 13' 02.12" E	NC
BL CONST. WB	BL CONST. WB 24	2143+04.41	2146+04.41	2149+04.41	2° 04' 38.87" (E)	12' 04' 31.97"	439.39	120.80	5.2000	N 89° 04' 30.45" E	N 45° 13' 02.12" E	NC
BL CONST. WB	BL CONST. WB 25	2149+04.41	2152+04.41	2155+04.41	2° 04' 38.87" (E)	12' 04' 31.97"	439.39	120.80	5.2000	N 89° 04' 30.45" E	N 45° 13' 02.12" E	NC
BL CONST. WB	BL CONST. WB 26	2155+04.41	2158+04.41	2161+04.41	2° 04' 38.87" (E)	12' 04' 31.97"	439.39	120.80	5.2000	N 89° 04' 30.45" E	N 45° 13' 02.12" E	NC
BL CONST. WB	BL CONST. WB 27	2161+04.41	2164+04.41	2167+04.41	2° 04' 38.87" (E)	12' 04' 31.97"	439.39	120.80	5.2000	N 89° 04' 30.45" E	N 45° 13' 02.12" E	NC
BL CONST. WB	BL CONST. WB 28	2167+04.41	2170+04.41	2173+04.41	2° 04' 38.87" (E)	12' 04' 31.97"	439.39	120.80	5.2000	N 89° 04' 30.45" E	N 45° 13' 02.12" E	NC
BL CONST. WB	BL CONST. WB 29	2173+04.41	2176+04.41	2179+04.41	2° 04' 38.87" (E)	12' 04' 31.97"	439.39	120.80	5.2000	N 89° 04' 30.45" E	N 45° 13' 02.12" E	NC
BL CONST. WB	BL CONST. WB 30	2179+04.41	2182+04.41	2185+04.41	2° 04' 38.87" (E)	12' 04' 31.97"	439.39	120.80	5.2000	N 89° 04' 30.45" E	N 45° 13' 02.12" E	NC
BL CONST. WB	BL CONST. WB 31	2185+04.41	2188+04.41	2191+04.41	2° 04' 38.87" (E)	12' 04' 31.97"	439.39	120.80	5.2000	N 89° 04' 30.45" E	N 45° 13' 02.12" E	NC
BL CONST. WB	BL CONST. WB 32	2191+04.41	2194+04.41	2197+04.41	2° 04' 38.87" (E)	12' 04' 31.97"	439.39	120.80	5.2000	N 89° 04' 30.45" E	N 45° 13' 02.12" E	NC
BL CONST. WB	BL CONST. WB 33	2197+04.41	2200+04.41	2203+04.41	2° 04' 38.87" (E)	12' 04' 31.97"	439.39	120.80	5.2000	N 89° 04' 30.45" E	N 45° 13' 02.12" E	NC
BL CONST. WB	BL CONST. WB 34	2203+04.41	2206+04.41	2209+04.41	2° 04' 38.87" (E)	12' 04' 31.97"	439.39	120.80	5.2000	N 89° 04' 30.45" E	N 45° 13' 02.12" E	NC
BL CONST. WB	BL CONST. WB 35	2209+04.41	2212+04.41	2215+04.41	2° 04' 38.87" (E)	12' 04' 31.97"	439.39	120.80	5.2000	N 89° 04' 30.45" E	N 45° 13' 02.12" E	NC
BL CONST. WB	BL CONST. WB 36	2215+04.41	2218+04.41	2221+04.41	2° 04' 38.87" (E)	12' 04' 31.97"	439.39	120.80	5.2000	N 89° 04' 30.45" E	N 45° 13' 02.12" E	NC
BL CONST. WB	BL CONST. WB 37	2221+04.41	2224+04.41	2227+04.41	2° 04' 38.87" (E)	12' 04' 31.97"	439.39	120.80	5.2000	N 89° 04' 30.45" E	N 45° 13' 02.12" E	NC
BL CONST. WB	BL CONST. WB 38	2227+04.41	2230+04.41	2233+04.41	2° 04' 38.87" (E)	12' 04' 31.97"	439.39	120.80	5.2000	N 89° 04' 30.45" E	N 45° 13' 02.12" E	NC
BL CONST. WB	BL CONST. WB 39	2233+04.41	2236+04.41	2239+04.41	2° 04' 38.87" (E)	12' 04' 31.97"	439.39	120.80	5.2000	N 89° 04' 30.45" E	N 45° 13' 02.12" E	NC
BL CONST. WB	BL CONST. WB 40	2239+04.41	2242+04.41	2245+04.41	2° 04' 38.87" (E)	12' 04' 31.97"	439.39	120.80	5.2000	N 89° 04' 30.45" E	N 45° 13' 02.12" E	NC
BL CONST. WB	BL CONST. WB 41	2245+04.41	2248+04.41	2251+04.41	2° 04' 38.87" (E)	12' 04' 31.97"	439.39	120.80	5.2000	N 89° 04' 30.45" E	N 45° 13' 02.12" E	NC
BL CONST. WB	BL CONST. WB 42	2251+04.41	2254+04.41	2257+04.41	2° 04' 38.87" (E)	12' 04' 31.97"	439.39	120.80	5.2000	N 89° 04' 30.45" E	N 45° 13' 02.12" E	NC
BL CONST. WB	BL CONST. WB 43	2257+04.41	2260+04.41	2263+04.41	2° 04' 38.87" (E)	12' 04' 31.97"	439.39	120.80	5.2000	N 89° 04' 30.45" E	N 45° 13' 02.12" E	NC
BL CONST. WB	BL CONST. WB 44	2263+04.41	2266+04.41	2269+04.41	2° 04' 38.87" (E)	12' 04' 31.97"	439.39	120.80	5.2000	N 89° 04' 30.45" E	N 45° 13' 02.12" E	NC
BL CONST. WB	BL CONST. WB 45	2269+04.41	2272+04.41	2275+04.41	2° 04' 38.87" (E)	12' 04' 31.97"	439.39	120.80	5.2000	N 89° 04' 30.45" E	N 45° 13' 02.12" E	NC
BL CONST. WB	BL CONST. WB 46	2275+04.41	2278+04.41	2281+04.41	2° 04' 38.87" (E)	12' 04' 31.97"	439.39	120.80	5.2000	N 89° 04' 30.45" E	N 45° 13' 02.12" E	NC
BL CONST. WB	BL CONST. WB 47	2281+04.41	2284+04.41	2287+04.41	2° 04' 38.87" (E)	12' 04' 31.97"	439.39	120.80	5.2000	N 89° 04' 30.45" E	N 45° 13' 02.12" E	NC
BL CONST. WB	BL CONST. WB 48	2287+04.41	2290+04.41	2293+04.41	2° 04' 38.87" (E)	12' 04' 31.97"	439.39	120.80	5.2000	N 89° 04' 30.45" E	N 45° 13' 02.12" E	NC
BL CONST. WB	BL CONST. WB 49	2293+04.41	2296+04.41	2299+04.41	2° 04' 38.87" (E)	12' 04' 31.97"	439.39	120.80	5.2000	N 89° 04' 30.45" E	N 45° 13' 02.12" E</	