



Florida Department of Transportation

RON DESANTIS
GOVERNOR

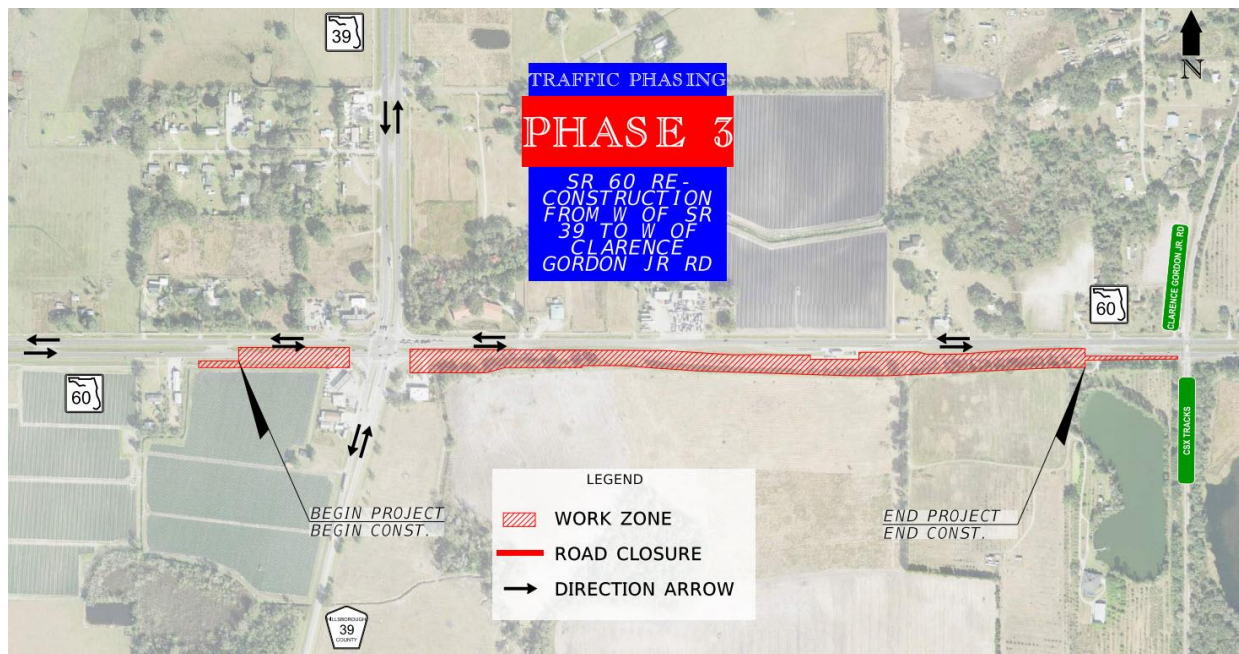
11201 N. Malcolm McKinley Drive
Tampa, Florida 33612

JARED W. PERDUE, P.E.
SECRETARY

For Immediate Release
August 20, 2025

Contact: Kris Carson
(813) 975-6060 | Kristen.Carson@dot.state.fl.us

New Traffic Pattern on SR 60 in Plant City this Saturday



Plant City, FL – Beginning Saturday, August 23, motorists should expect traffic on SR 60 to shift to the north side of the road from west of SR 39 to west of Clarence Gordon Jr. Road in Plant City.

Over the next eight weeks, drivers may experience traffic delays and congestion on all nearby roads as crews build the new travel lanes along the south side of SR 60, weather permitting.

Access for businesses, residents, and emergency vehicles is being maintained. Drivers are reminded to slow down, stay alert, and drive safely through the work zone.

Improvements include the resurfacing of SR 60 from SR 39 to Clarence Gordon Jr. Road, replacing the asphalt pavement with concrete at the intersection of SR 39, and modifying the median openings on SR 60 to the east and west of SR 39 in Hillsborough County. Construction activities are expected to finish by fall of 2026.

For more information on the SR 60 reconstruction project or to sign up for traffic alerts, visit [FDOTTampaBay.com](https://www.fdot.com/TampaBay).

[FDOTTampaBay.com](https://www.fdot.com/TampaBay) | X: [@MyFDOT_Tampa](https://twitter.com/MyFDOT_Tampa) | Facebook: [@MyFDOTTampa](https://www.facebook.com/MyFDOTTampa)