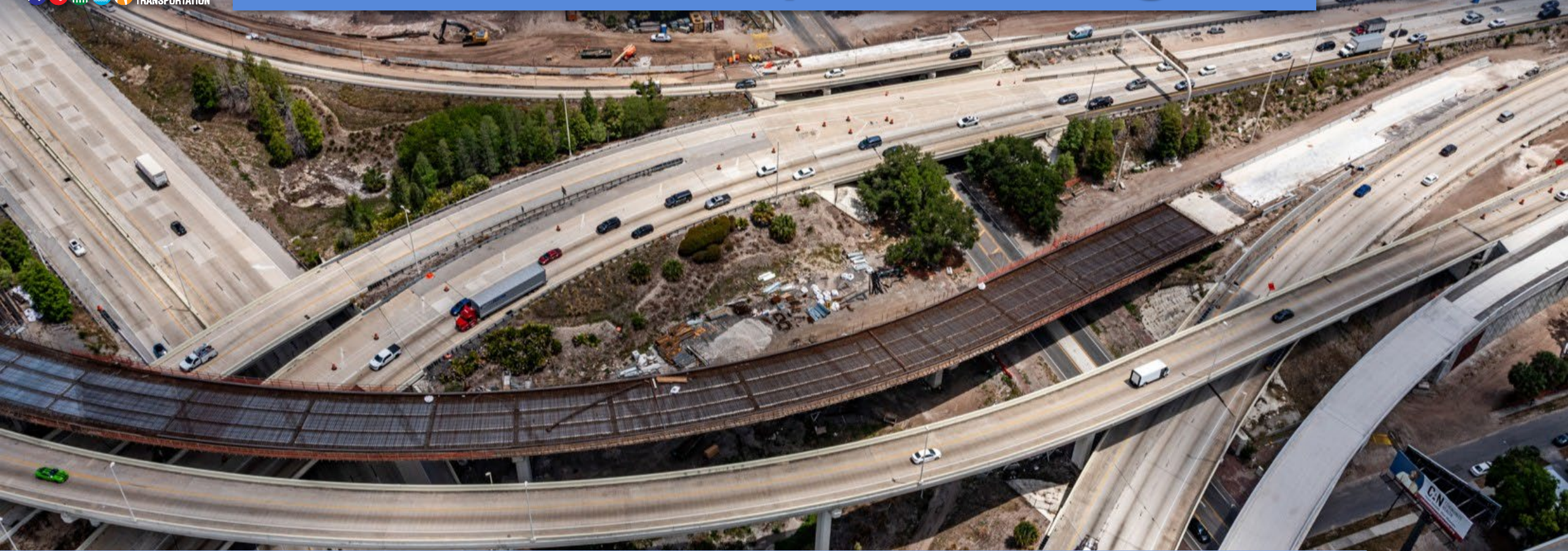




Downtown Tampa Interchange



Current Work Activities (June 2026)

- 100% - Steel girders installed for new ramp from SB I-275 to EB I-4 ramp
- 100% - Concrete pavement installed for new ramp from NB I-275 to 14th/15th Streets
- 90% - Bridge decks installed for new ramp from NB I-275 to 14th/15th Streets
- 90% - Utilities relocated



Current Work Activities (June 2026)

- 83% - Old storm drainage pipes removed
- 81% - New major drainage pipes installed
- 77% - Mechanically Stabilized Earth (MSE) walls installed
- 62% - New Intelligent Transportation Systems (ITS) fiber installed
- Lighting and signalization at 14th and 15th streets is ongoing



Downtown Tampa Interchange



Downtown Tampa Interchange



New SB I-275 ramp to EB I-4

WB I-4 ramp to NB I-275

Downtown Tampa Interchange



New traffic signals

New traffic signals

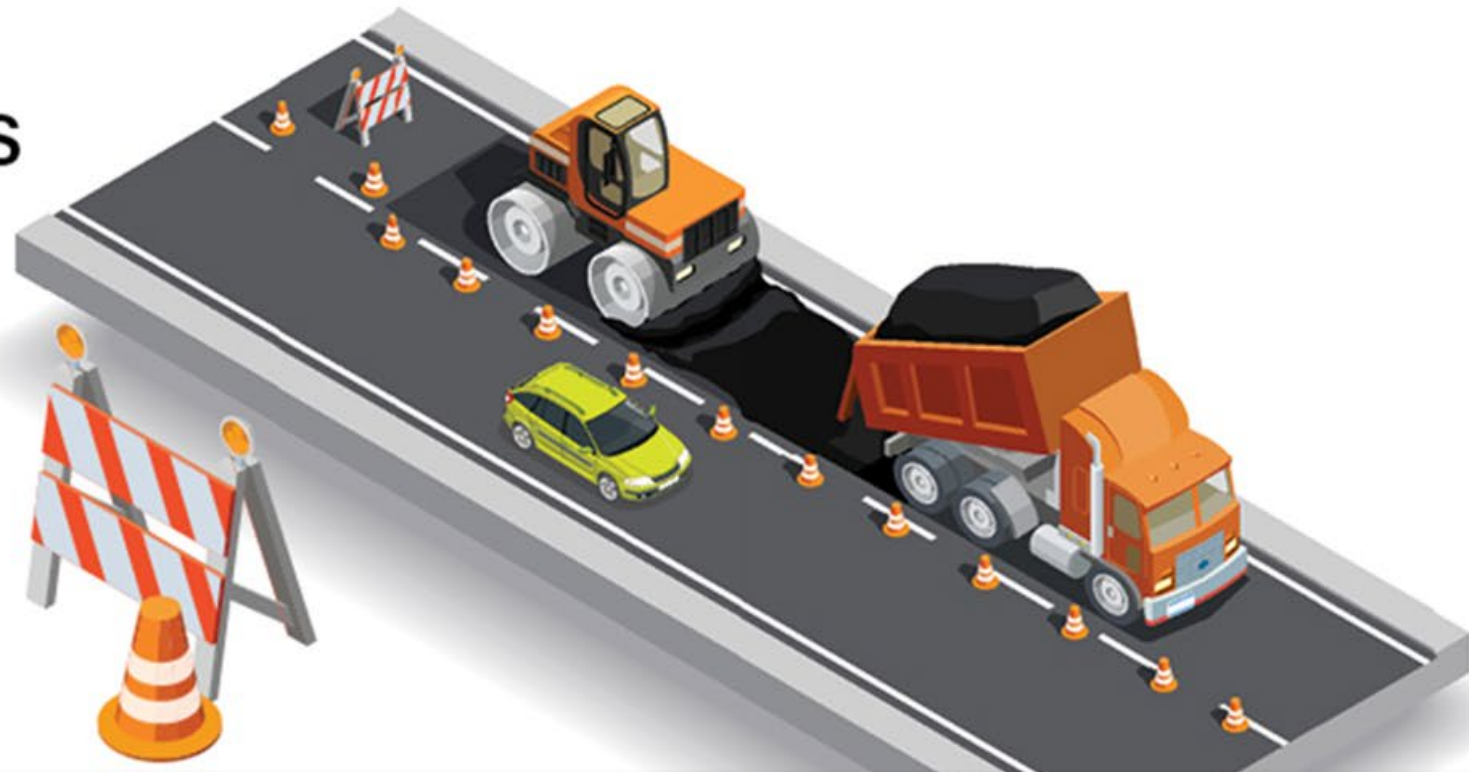
Downtown Tampa Interchange



WORK ZONE SAFETY

It's Everyone's Job

BE AWARE of workers
while driving through
an active work zone.



Downtown Tampa Interchange



Thank you!

Downtown Tampa Interchange

