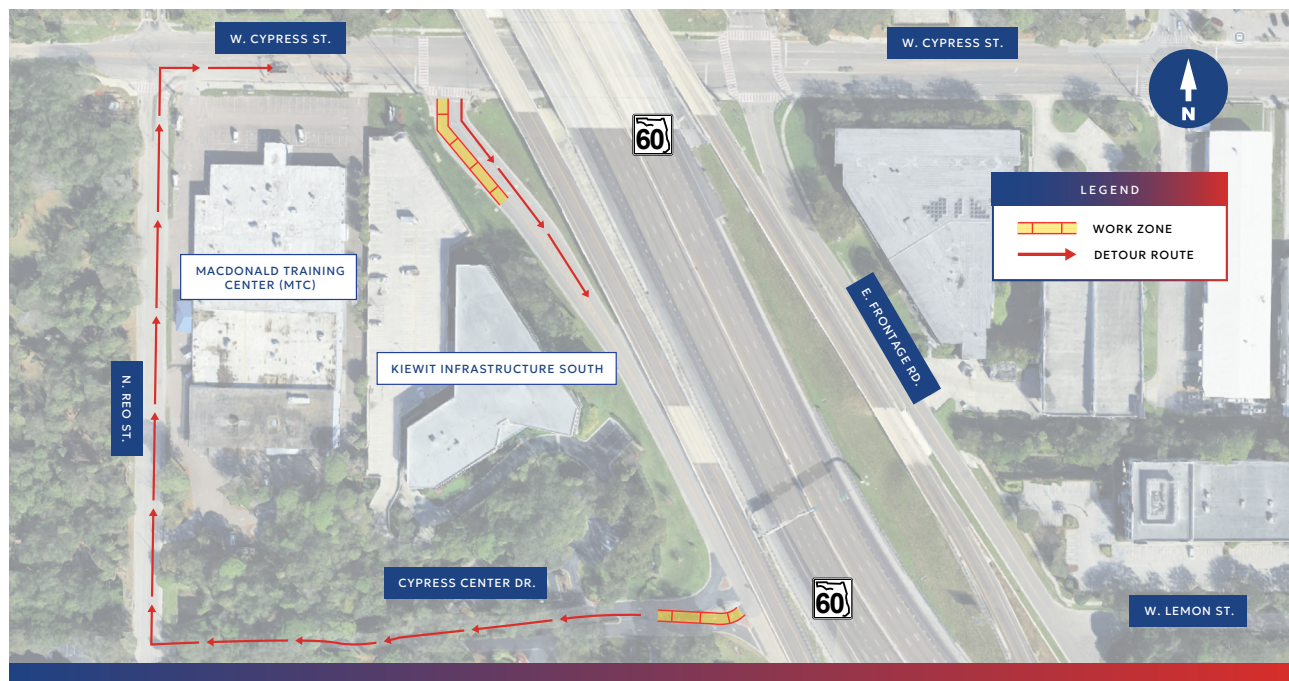




FLORIDA DEPARTMENT OF TRANSPORTATION UTILITY RELOCATION

NORTHBOUND LANE CLOSING PERMANENTLY ON FRONTAGE ROAD FROM CYPRESS CENTER DRIVE TO CYPRESS STREET

Starting **Wednesday, January 21, 2026**, the northbound lane on E. Frontage Road (located west of SR 60/Memorial Highway) from Cypress Center Drive to W. Cypress Street **will close permanently**. This change will result in E. Frontage Road (west of SR 60/Memorial Highway) as a **one-way** access route to southbound I-275 from W. Cypress Street.



This new traffic configuration will continue to provide motorists with access to southbound I-275 from Cypress Street via the one-way southbound Frontage Road.

Drivers should use caution while traveling through the work zone and remain alert for construction workers.

This permanent closure is necessary for crews to perform utility relocation work as part of the future safety and operational improvements coming to Tampa's Westshore Interchange (I-275/SR 60) in Hillsborough County.



For more information about this project, visit
FDOTTAMPABAY.COM
T: 954.594.0735 E: roadwork@dot.state.fl.us

