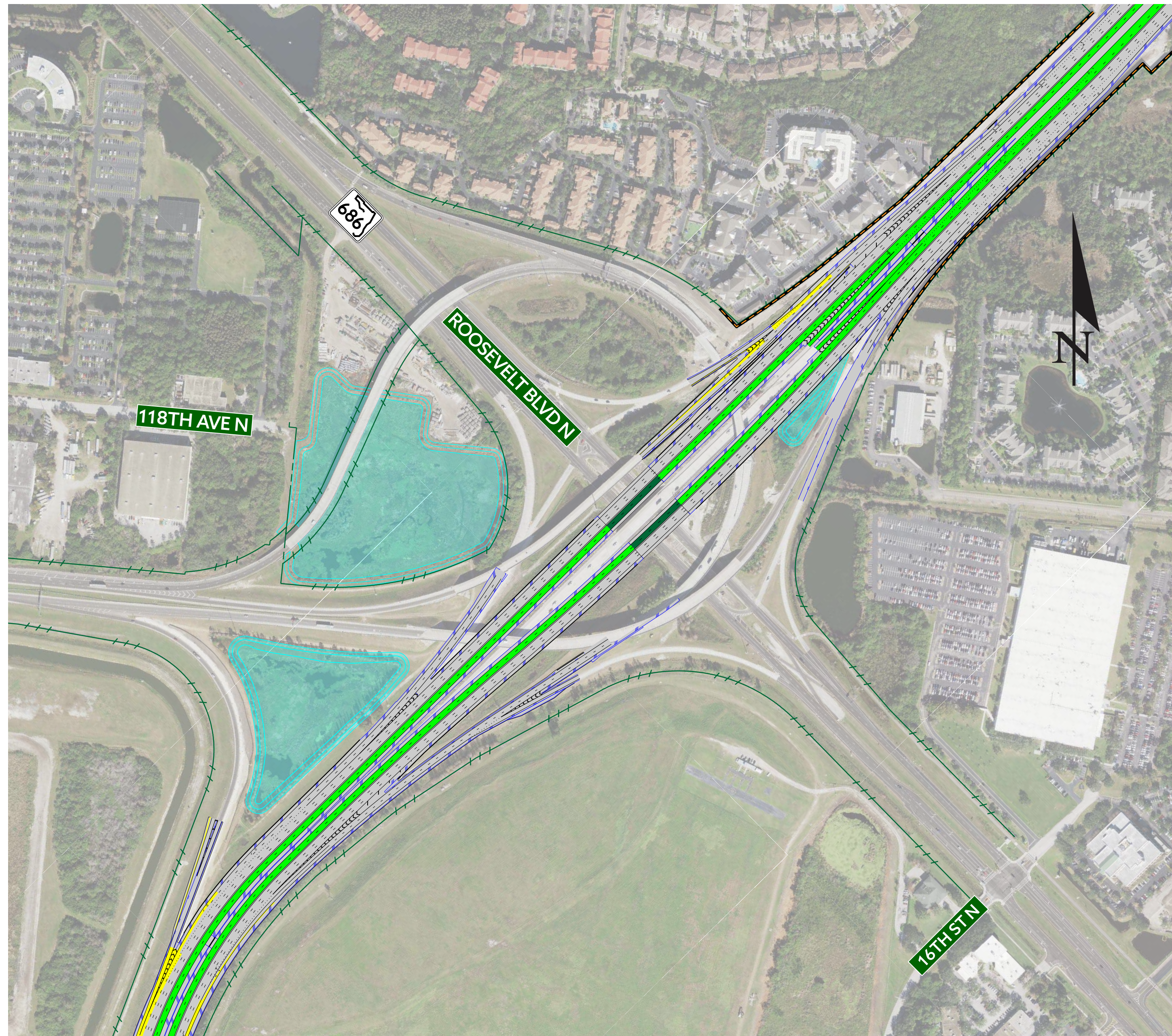
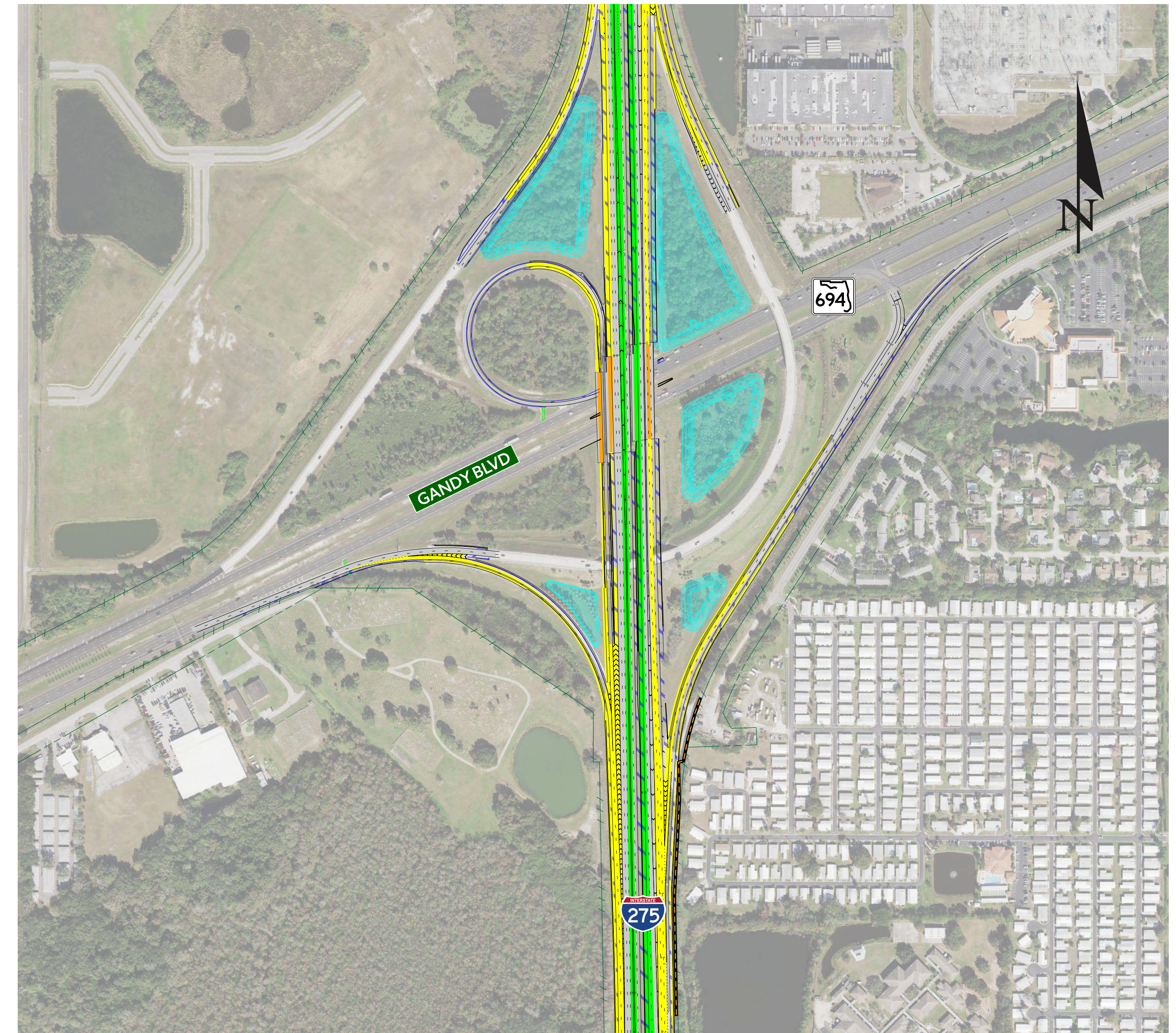


ROOSEVELT BOULEVARD



- Modifying the SB I-275 on-ramp to allow drivers more time to merge
- Widening the SB I-275 exit ramp towards the Gateway Expressway to allow for more time to merge

GANDY BOULEVARD



- Widening the NB I-275 exit ramp to provide a two-lane exit
- Constructing a new bridge from the WB Gandy Blvd. on-ramp to SB I-275
- Vehicles from the WB Gandy Blvd. on-ramp will merge with vehicles from the EB Gandy Blvd. on-ramp to access SB I-275